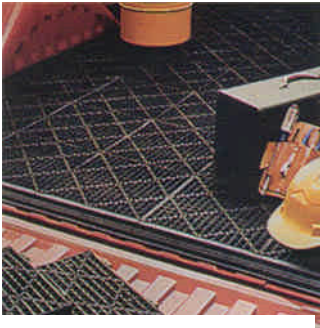




ANTI-SLIP PERFORATED TILES



The perfect tile for protecting fragile surfaces.



Our easy-to-maintain perforated tiles resist wear and tear.

Description / Dimensions
>Design P1234 1/4 " hole, perforated tile 12" x 12" x 3/4"
>Design PTF Trim female 12" x 2 1/2" x 3/4"
>Design PTM Trim male 12" x 2 1/2" x 3/4"
>Design PTC Trim corner

«Tile & trim available from stock in Black, Blue, Burgundy, Green, Terracotta, Yellow & Grey.



Resistant to shocks and most caustic products, our tiles are ideal for making boundaries for dangerous work zones.

CWF Mat perforated tiles are ideal for creating a workspace that's clean, safe and functional.

With a 1/4" hole, they're very easy to clean, as the perforations catch dust, dirt and other particles that are quickly removed with a vacuum.



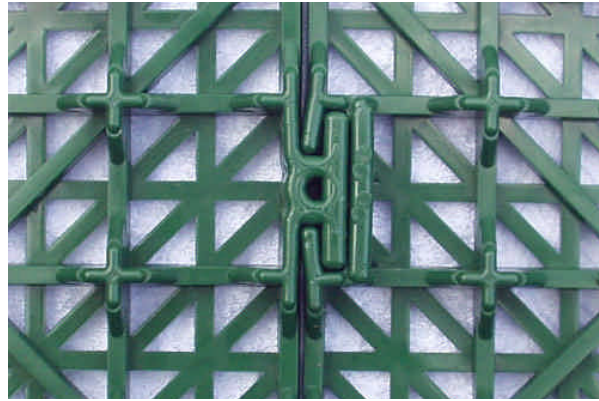
CWF Flooring, Inc. 38325 6th St. East, Palmdale, CA 93550

Tel. 1-661-273-8700, 1-661-273-8701 Fax: 1-661-885-8300

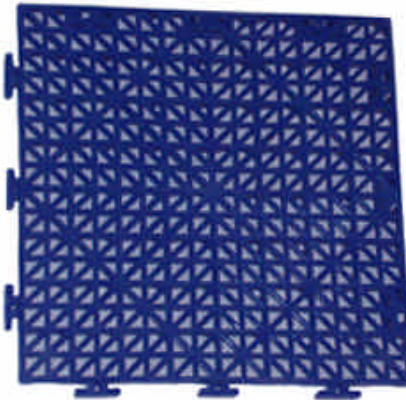
Web: www.CartwheelFactory.Com Email: Sales@CartwheelFactory.com

**CWF
Flooring
Inc.**

ANTI-SLIP PERFORATED TILES



Bottom View of T-Interlocking Devices



TOP VIEW OF ANTI-SLIP PERFORATED TILES

There are three female T-Interlocking Devices on each side –top and right side and three male T-Interlocking Devices on left side and bottom of tile.

**CWF
Flooring
Inc.**

CWF Flooring, Inc. 38325 6th St. East, Palmdale, CA 93550

Tel. 1-661-273-8700, 1-661-273-8701 Fax: 1-661-885-8300

Web: www.CartwheelFactory.Com Email: Sales@CartwheelFactory.com