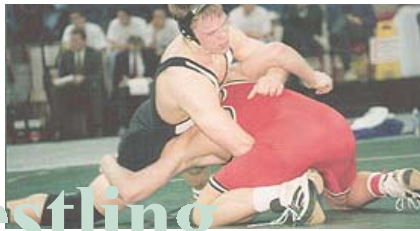
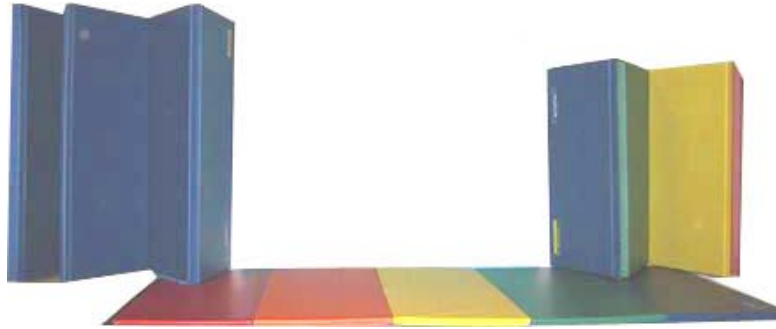


# THE CARTWHEEL FACTORY

GYM, WRESTLING, MARTIAL ARTS, GYMNASTICS, CHEERLEADING MATS  
GYMNASTICS, PHYSICAL / MOVEMENT EDUCATION SUPPLIES



Wrestling  
Wrestling



Martial Arts  
Martial Arts



Physical Ed  
Physical Ed



Gymnastics  
Gymnastics

The Cartwheel Factory  
1150 S. Lake St. LA CA 90006  
Tel. No. 1-213-380-7655 FAX 1-213-947-1598  
Web Address: [www.CartwheelFactory.Com](http://www.CartwheelFactory.Com)  
E-Mail: [sales@cartwheelfactory.com](mailto:sales@cartwheelfactory.com)

# Folding Mat Price List

FOLDING GYM MATS FOR:  
WRESTLING / MARTIAL ARTS / CHEERLEADING / EXERCISE / GYMNASTICS

SIZE	THICKNESS	VELCRO SIDES	WEIGHT (lbs.)	SHIPPING	MAT COST	TOTAL
4 x 6	1 3/8"	2	15	29.00	116.00	145.00
4 x 6	1 3/8"	4	15	32.50	130.00	162.50
4 x 6	2"	2	17	33.50	134.00	167.50
4 x 6	2"	4	20	39.50	158.00	197.50
4 x 8	1 3/8"	2	22	34.00	136.00	170.00
4 x 8	1 3/8"	4	22	38.75	155.00	193.75
4 x 8	2"	2	25	41.50	166.00	207.50
4 x 8	2"	4	25	47.25	189.00	236.25
5 x 10	1 3/8"	2	30	50.00	200.00	250.00
5 x 10	1 3/8"	4	30	55.00	220.00	275.00
5 x 10	2"	2	35	61.75	247.00	308.75
5 x 10	2"	4	35	67.50	270.00	337.50
6 x 12	1 3/8"	2	40	*	270.00	*
6 x 12	1 3/8"	4	40	*	300.00	*
6 x 12	2"	2	45	*	335.00	*
6 x 12	2"	4	45	*	369.00	*
7 x 14	1 3/8"	2	47	*	393.00	*
7 x 14	1 3/8"	4	47	*	415.00	*
7 x 14	2"	2	59	*	465.00	*
7 x 14	2"	4	59	*	500.00	*

\*=zip code needed for shipping quote

- Color Options:**
- ▶ Purple ▶ Beige ▶ White
  - ▶ Red ▶ Gray ▶ Yellow ▶ Light Blue
  - ▶ Royal Blue ▶ Maroon ▶ Black
  - ▶ Orange ▶ Dark Green or a combination.



Mat corner showing Velcro® on edges.  
To produce large mat areas, Velcro on 4 sides is required.



Standard thickness is 1 3/8 inches of closed cell Cross-link polyurethane foam covered with durable 18 oz. nylon reinforced vinyl stitched. with Dacron thread



**GUARANTEE:** Our quality made crafted gymnastic mats are guaranteed for a period of two year from the date of invoice against faulty manufacturing or defects in materials. Cartwheel Factory's obligation under this warranty shall be to repair, at its option, replace, at its expense, any defective part of parts. Material claimed defective must be returned PREPAID to us for examination. Breakage caused by extreme usage will not be covered as it does not constitute defective material or faulty workmanship.

# Movement Ed



**Movement Ed Center**  
Overall size: 8' x 10' **\$475.00**



**Incline Mats**  
(70 ILD-with 1.25" mat layer)  
24" x 48" x 14" **\$115.00**  
36" x 72" x 16" **\$200.00**  
48" x 72" x 16" **\$247.00**  
60" x 84" x 18" **\$340.00**




**Mail Boxes**  
16" x 30" x 16" **\$78.00**  
20" x 36" x 16" **\$97.00**  
24" x 36" x 18" **\$137.00**  
28" x 36" x 20" **\$152.00**

**Octagon Barrels**  
15" x 15" x 24" **\$73.00**  
20" x 20" x 28" **\$107.00**  
25" x 25" x 36" **\$160.00**  
30" x 30" x 36" **\$208.00**



**3 Block Mats**  
4' x 4', 3' x 3', 2' x 2' (6" thick)  
**\$280.00**



**NOTE:** Our incline mats are made of quality 70 ILD Polyfoam (not the cheaper mushy 44 ILD foam) layered with 1.25" polyethylene mat for firmness and standing support and balance.



**Mini-Bar**

Specifically designed for small hands our Mini-bar bar has a diameter of only 1 1/2 inch. The wood/fiberglass rail feels like official bars. The height of the bar adjusts from 38 inches high to a high of 60 inches high. The Mini-bar weights only 48 lbs. for easy storage and portability. Delivery time: 5 wks. Price **\$279.00**



**Floor Balance Beams**

Our padded balance beam is padded with 1/4 inch closed cell rubber-rubber hard enough to maintain balance soft enough to minimize injury. Our wood beam is 7 inches off the floor and made with non-scuffing rubber leg pads. Covered with short hair durable royal blue carpet or synthetic suede our beams are great for private and institutional use.

8 ft. Carpet **\$169.00** Suede **\$210.00**  
12 ft. Carpet **\$199.00** Suede **\$285.00**



**Mini-Spring Board**  
Designed for kids weighing up to 75 lbs. Supplied with four removable springs. Measures 24" x 24" x 8" high **\$195.00**



**Jr. Spring Board**  
Six removable stainless steel springs. Ideal for gymnast weighing 75-120 lbs. 36" x 24" x 8" high **\$215.00**

# Physical Education

## INNOVATION!



**The STAR JUMPER** © is like a portable long jump & split leap trainer on a mat (3 ft. x 12 ft.) for elementary school physical / movement education classes. Kids sprint, take off n' jump from the **Rocket Foot** that corresponds to their age group and leaps toward the farthest possible star. The most distant star is a Gold 10.

Score cards included.  
\$190.00



**Cartwheel Factory Mat:** To learn a cartwheel kids simply follow the 'mapped out' hand/foot numeric pattern. Beginner- Spiral Arrows , Intermediate- Dotted Line , Advanced- Star Line. \$155.00

### Ascending Balance Beam

The revolutionary new Ascending Balance Beam is a nine foot long wood balance beam on an incline. The beam starts at 9" high and goes up to 19" high. It's walking surface is 4" wide at the low end, 1 1/2 " wide at the top. In other words, the higher you go the thinner the beam gets.

The excitement builds and challenges intensifies due to the upward incline and narrowing of the beam. Get to the end, turn, and walk down. Can you do it? Feel the exhilaration \$267.00



Six year old Andrew performs the backward walk up the incline, turns, then walks backwards down !